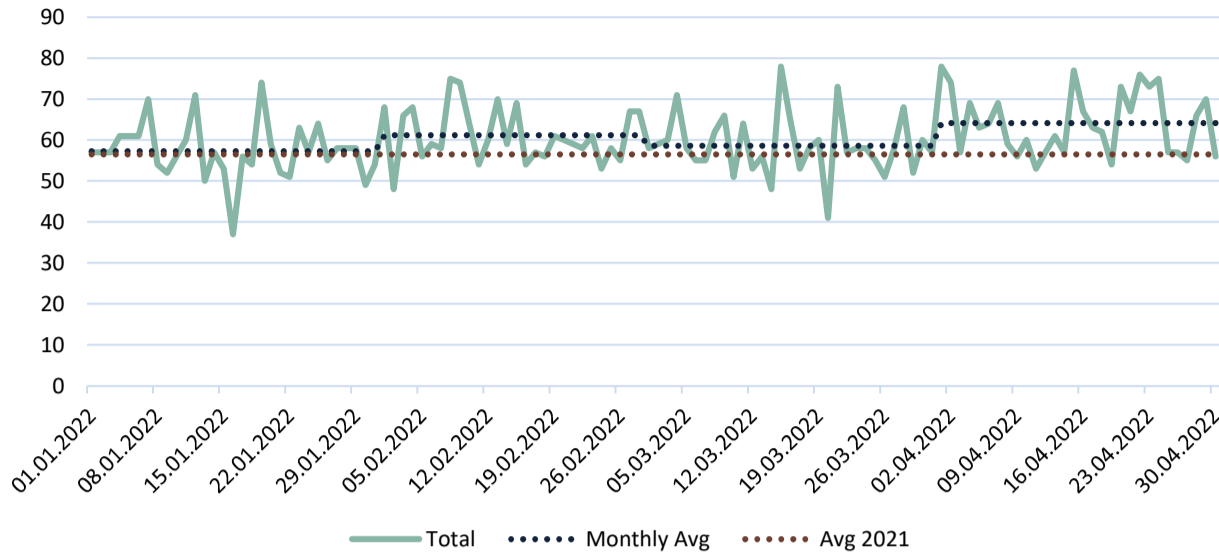




Last Month **1925** **+107** from last month Total Transits **7233** **+846** comp. same time last year Daily Average **60,28** **+3,73** comp. avg last year

Transits per day



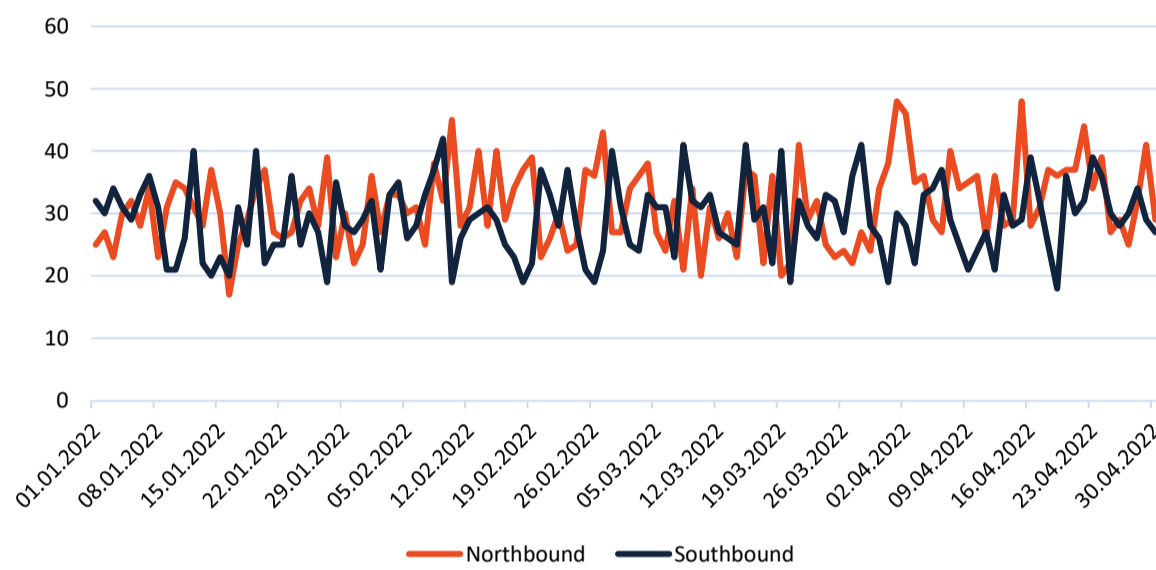
Yearly overview

Month	Transits
Jan	1776
Feb	1714
Mar	1818
Apr	1925
May	
Jun	
Jul	
Aug	
Sep	
Oct	
Nov	
Dec	
Total	7233

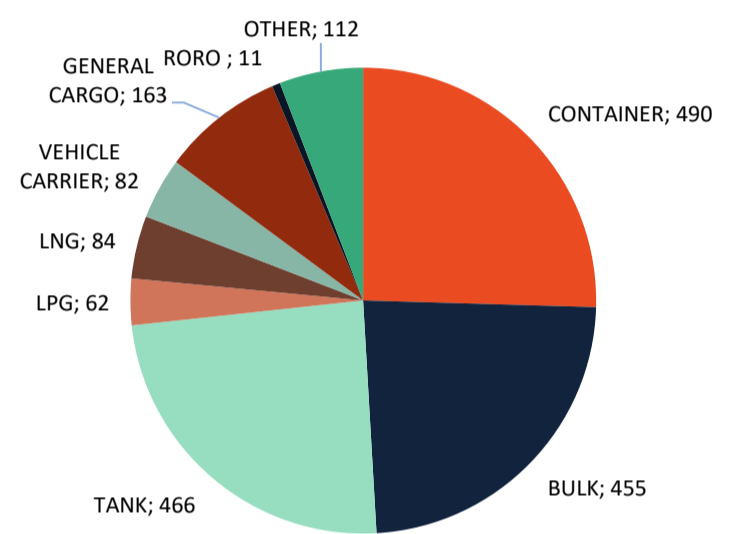
April Comparison

Year	Transits
2011	1478
2012	1401
2013	1350
2014	1355
2015	1376
2016	1335
2017	1418
2018	1428
2019	1529
2020	1723
2021	1796
2022	1925
Average	1510

Northbound vs Southbound

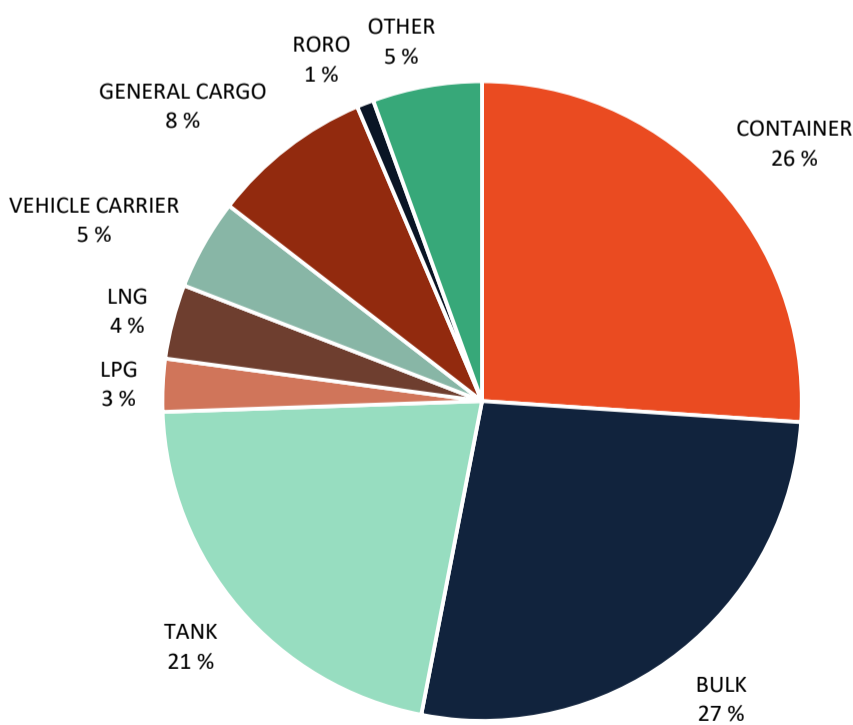


Segment Last Month



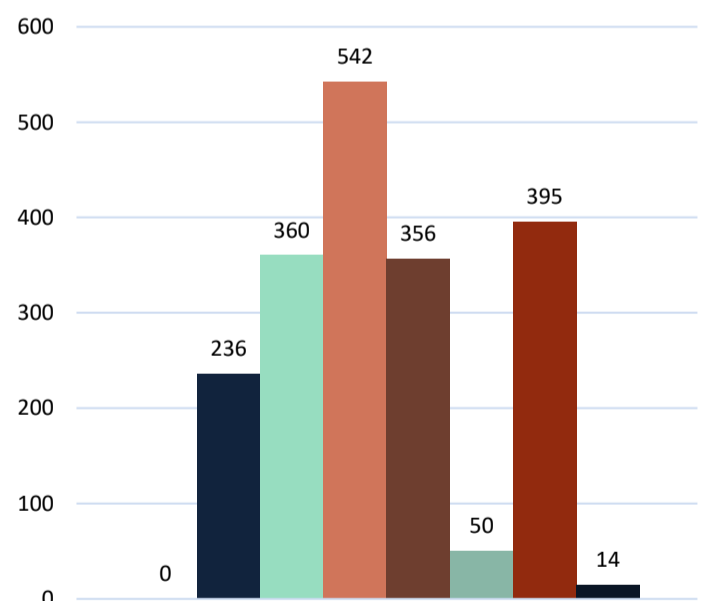
Segments

Segment Distribution 2022



- VLOC (DWT > 220,000)
- CAPESIZE (DWT 125,000 - 220,000)
- POST-PANAMAX (DWT <125,000)
- PANAMAX (DWT 60,000 - 80,000)
- SUPRAMAX (DWT 50,000 - 60,000)
- HANDYMAX (DWT 40,000 - 50,000)
- HANDYSIZE (DWT 20,000 - 40,000)
- SMALL HANDY (DWT UP TO 20,000)

Bulk Segment



- ULCC (DWT MORE THAN 320,000)
- VLCC (DWT 200,000 - 320,000)
- SUEZ MAX (DWT 120,000 - 200,000)
- LR 2 (DWT 80,000 - 120,000)
- LR 1 (DWT 55,000 - 80,000)
- MR (DWT 40,000 - 55,000)
- HANDY (DWT UP TO 40,000)

Tanker Segment

