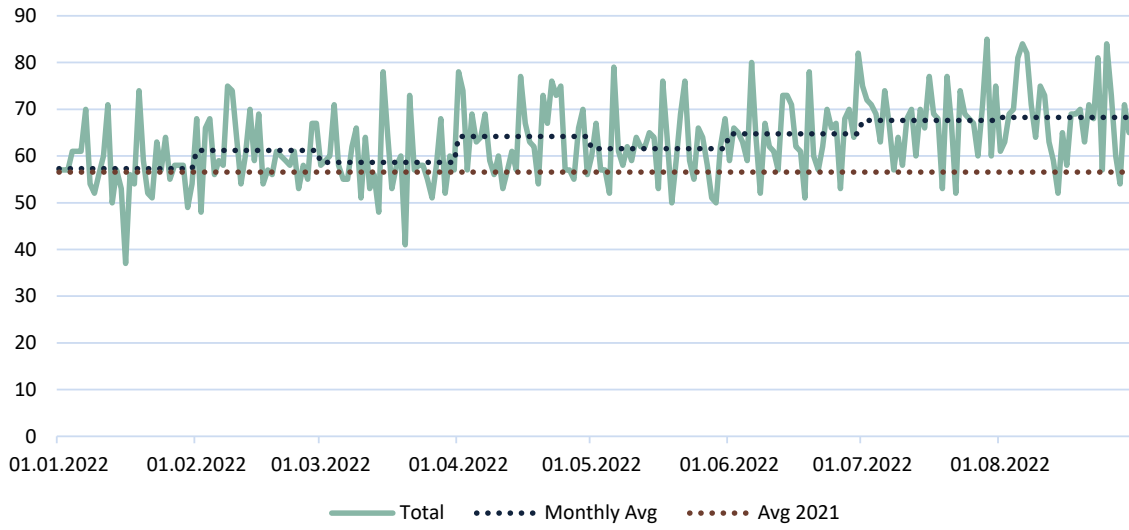



 Last Month **2116** **+20** from last month

 Total Transits **15297** **+2020** comp. same time last year

 Daily Average **62,95** **+6,40** comp. avg last year

### Transits per day



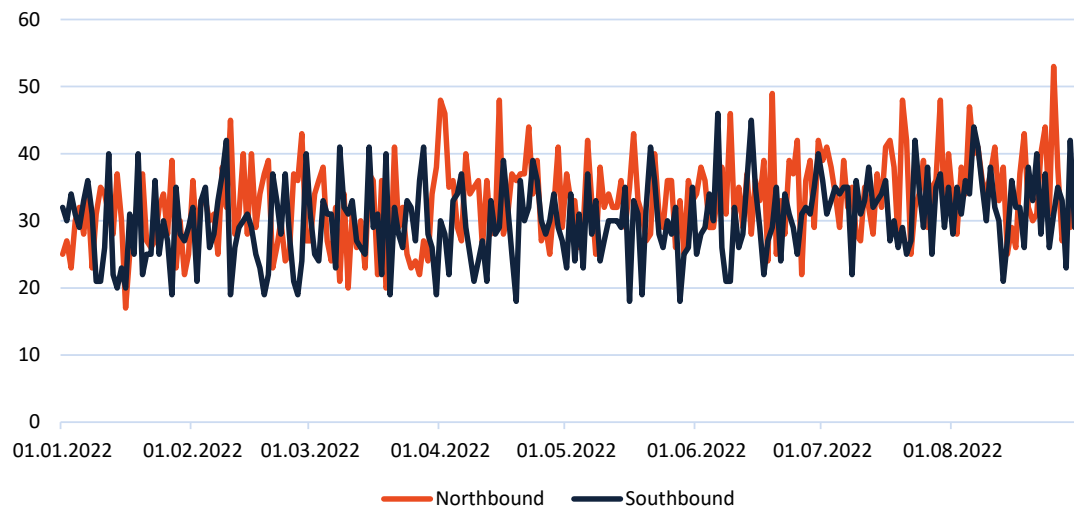
### Yearly overview

Month	Transits
Jan	1776
Feb	1714
Mar	1818
Apr	1925
May	1909
Jun	1943
Jul	2096
Aug	2116
Sep	
Oct	
Nov	
Dec	
<b>Total</b>	<b>15297</b>

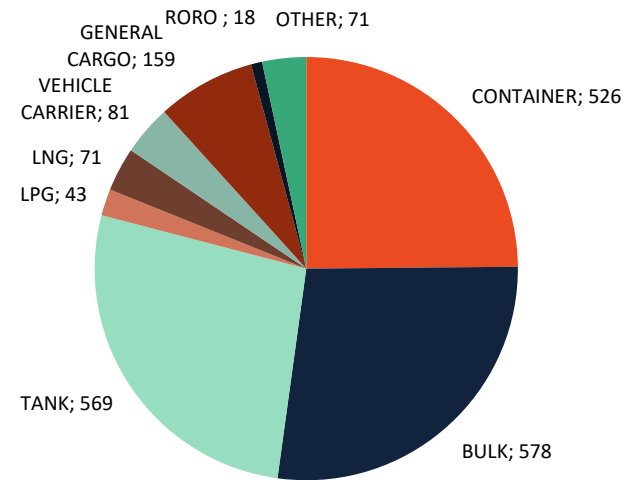
### August Comparison

Year	Transits
2011	1528
2012	1496
2013	1420
2014	1544
2015	1492
2016	1440
2017	1487
2018	1567
2019	1675
2020	1505
2021	1863
2022	2116
<b>Average</b>	<b>1594</b>

### Northbound vs Southbound

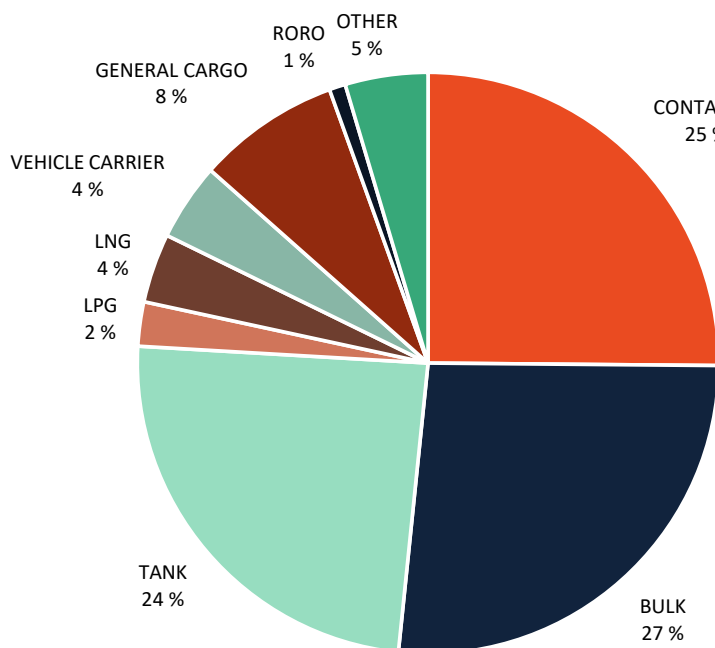


### Segment Last Month



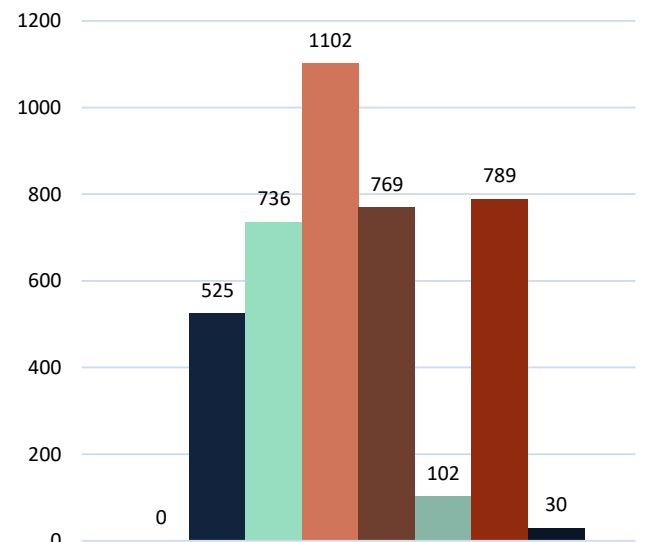
## Segments

### Segment Distribution 2022



- VLOC (DWT > 220,000)
- CAPESIZE (DWT 125,000 - 220,000)
- POST-PANAMAX (DWT <125,000)
- PANAMAX (DWT 60,000 - 80,000)
- SUPRAMAX (DWT 50,000 - 60,000)
- HANDYMAX (DWT 40,000 - 50,000)
- HANDYSIZE (DWT 20,000 - 40,000)
- SMALL HANDY (DWT UP TO 20,000)

### Bulk Segment



- ULCC (DWT MORE THAN 320,000)
- VLCC (DWT 200,000 - 320,000)
- SUEZ MAX (DWT 120,000 - 200,000)
- LR 2 (DWT 80,000 - 120,000)
- LR 1 (DWT 55,000 - 80,000)
- MR (DWT 40,000 - 55,000)
- HANDY (DWT UP TO 40,000)

### Tanker Segment

